

# **CITY OF KELOWNA**

## **BYLAW NO. 9330**

### **Road Closure and Removal of Highway Dedication Bylaw A Portion of Abbott Street adjacent to 2406 and 2416 Abbott Street**

**A bylaw pursuant to Section 40 of the Community Charter  
to authorize the City to permanently close and remove the  
highway dedication of a portion of highway being a portion  
of Abbott Street adjacent to 2406 and 2416 Abbott Street.**

---

NOW THEREFORE, the Municipal Council of the City of Kelowna, in open meeting assembled, hereby enacts as follows:

1. That portion of highway attached as Schedule "A" comprising that portion of Abbott Street shown in bold black as Parcel A and Parcel B on the Reference Plan prepared by Linden E. Fritsch, B.C.L.S., Fritsch Land Surveying Inc. and completed on 31<sup>st</sup> day of January, 2005, is hereby stopped up and closed to traffic and the highway dedication removed.
2. The Mayor and City Clerk of the City of Kelowna are hereby authorized to execute such conveyances, titles, survey plans, forms and other documents on behalf of the said City as may be necessary for the purposes aforesaid and to affix the Corporate Seal of the said City thereto.

Read a first, second and third time by the Municipal Council this 14<sup>th</sup> day of February, 2005.

Adopted by the Municipal Council of the City of Kelowna this    day of    , 2005

---

Mayor

---

City Clerk

**REFERENCE PLAN TO ACCOMPANY CITY OF  
KELOWNA BYLAW NO. 9330, CLOSING ROAD  
& CANCELLING THE DEDICATION OF HIGHWAY,  
DEDICATED BY PLANS 2813 & B6339,  
ALL OF D.L. 14, ODYD.**

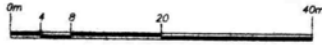
Pursuant To Section 120 Of The Land Title Act.  
And Section 40 Of The Community Charter

**PLAN KAP**

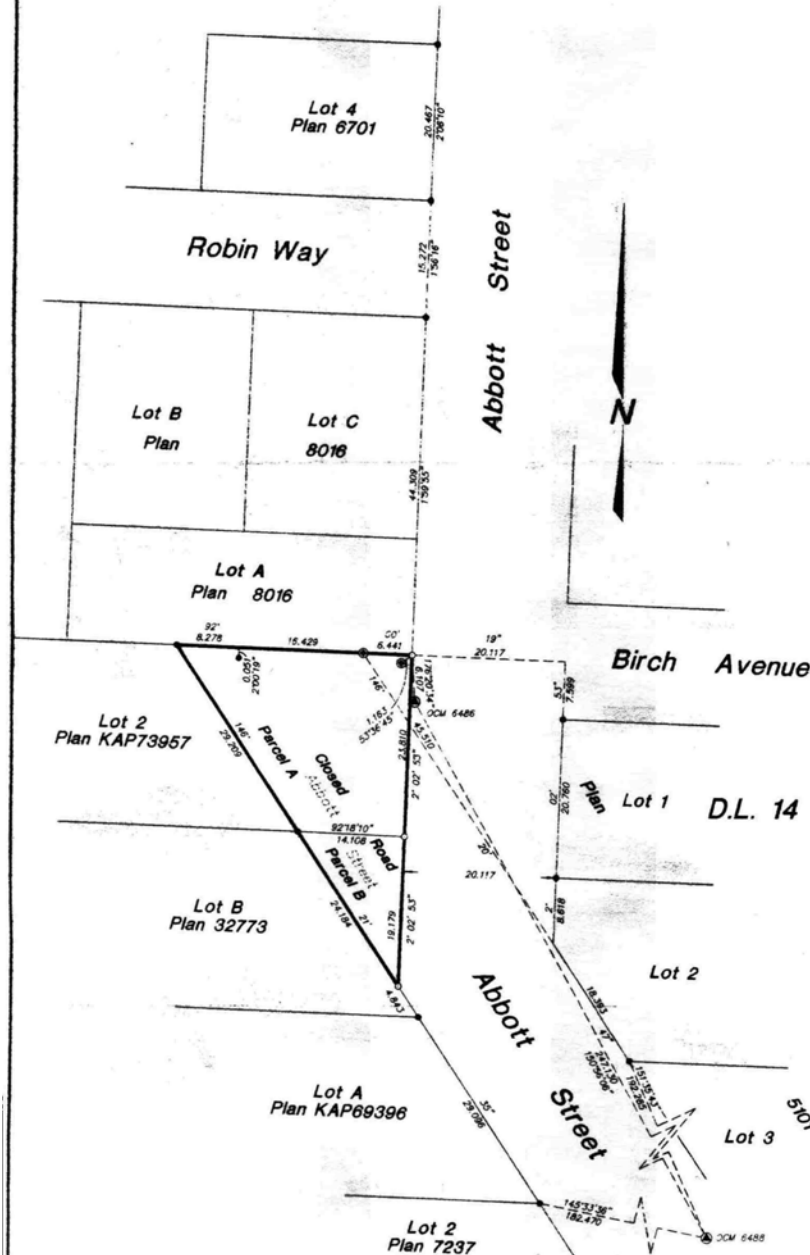
Deposited in the Land Title Office at Kamloops, B.C.  
this day of 20

REGISTRAR

BCGS 82E.083



Scale 1:400 Metric



**Book Of Reference**

Parcel	Legal Description	Area
Parcel A	Closed Road D.L. 14, ODYD.	537.8 m <sup>2</sup>
Parcel B	Closed Road D.L. 14, ODYD.	138.1 m <sup>2</sup>

**LEGEND:**

- Control Monument
- Non-Standard Iron Post Found
- Standard Iron Post Found
- Standard Iron Post Set

Distances shown are in metres and decimals thereof.

Integrated Survey Area No. 4 – City of Kelowna.  
M4083(CORS)

Old Bearings are derived from observations between  
geodetic control monuments 6486 & 6488.

This plan shows horizontal ground-level distances  
except where otherwise noted. To compute grid  
distances, multiply ground-level distances by combined  
factor 0.9999436.

This Plan Lies Within The Regional District  
of Central Okanagan.

I, Linden E. Fritsch, a British Columbia Land Surveyor  
of the City of Kelowna, in British Columbia, certify  
that I was present at and personally supervised  
the survey represented by this plan, and that the  
survey and plan are correct. The field survey was  
completed on the 7th day of January, 2005.  
The plan was completed and checked, and the  
checklist filed under # 26891, on the 31st  
day of January, 2005.

*[Signature]*  
BRITISH COLUMBIA LAND SURVEYOR

*Fritsch Land Surveying Inc.*  
British Columbia & Canada Land Surveyors  
#202 - 588 Leon Avenue  
Kelowna B.C., V1Y 6J6

(250) 762-0722

OS-001(202,50)